

A warm welcome

REPUTED for its reliability and high standard of service, R W Knight and Son still operates out of the attractive and historic farm buildings at Castle Farm.

My first visit there in January, saw me driving out of the city into the countryside. A layer of snow dusted the fields and roofs, creating an idyllic winter scene.

The R W Knight showroom is spread over two floors and they are packed to the rafters with stoves, cooking ranges, fire grates and accessories.

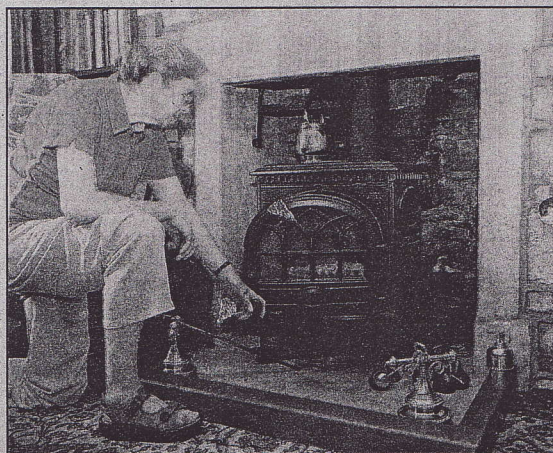
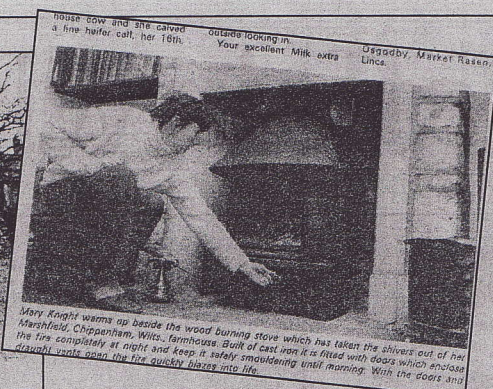
They stock more than 12 makes of stoves and flues to suit any type of stove you choose. The staff are extremely knowledgeable about the stock and spend as much time as you need making sure that you go away with the right stove. Once the correct stove is chosen – for the room, heat output and style – R W Knight and Son recommend an installer. One of whom, is Phil Rummney who runs Old Sodbury Builders and has been installing stoves R W Knight and Son have sold for many years. Together, they provide a complete service – a wealth of knowledge about stoves combined with the experience of fitting them.



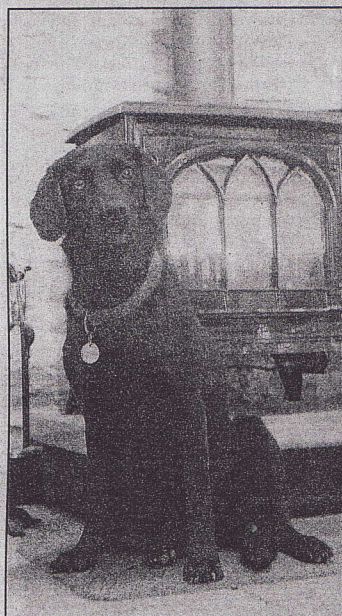
Friendly: The drive to R W Knight and Son, above, and shop, top, on a snowy, winter's day last January when Sarah visited



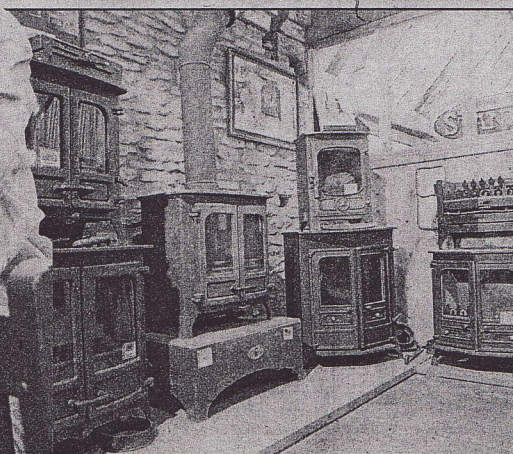
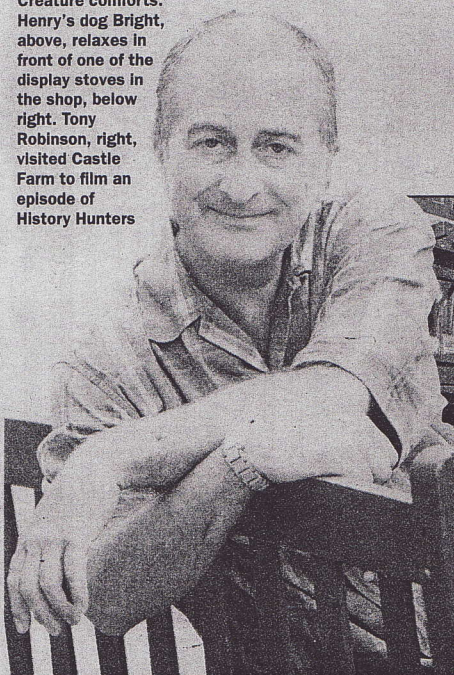
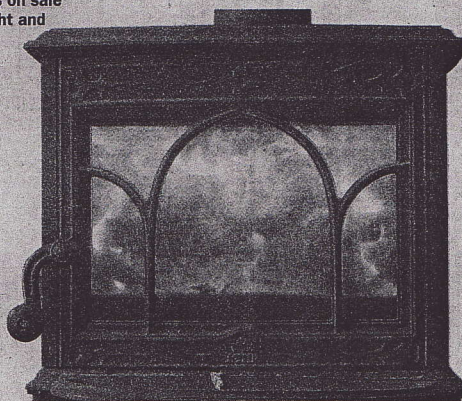
Memory lane: Dick Knight back in 1975 in front of the medieval longhouse, above. Mary Knight as she appeared in Farmers' Weekly, above right, and today, right



Hot stuff: One of the many stoves on sale at R W Knight and Son, right



Creature comforts: Henry's dog Bright, above, relaxes in front of one of the display stoves in the shop, below right. Tony Robinson, right, visited Castle Farm to film an episode of History Hunters



Show-stopping stand awarded first place at Gatcombe event

R W Knight and Son won the Best Trade Stand at this month's Festival of British Eventing from Gatcombe Park. The event was judged by the British Equestrian Trade Association.

If you were unable to attend the Gatcombe show, don't worry, you can visit the R W Knight and Son stand at the following summer shows:

- Berkeley Show on Monday, August 27;
- Frome Cheese Show on Saturday, September 8;
- Newbury Show on Saturday and Sunday, September 15 and 16.

For more information about electric, gas and wood-burning stoves, contact R W Knight & Son, Castle Farm, Marshfield, Chippenham, Wiltshire, SN14 8HU, call: 01225 891469, visit their website at www.knight-stoves.co.uk, fax: 01225 892369 or email: enquiries@knight-stoves.co.uk



Award-winning: Dick Knight receives the award for best stand from Captain Mark Phillips